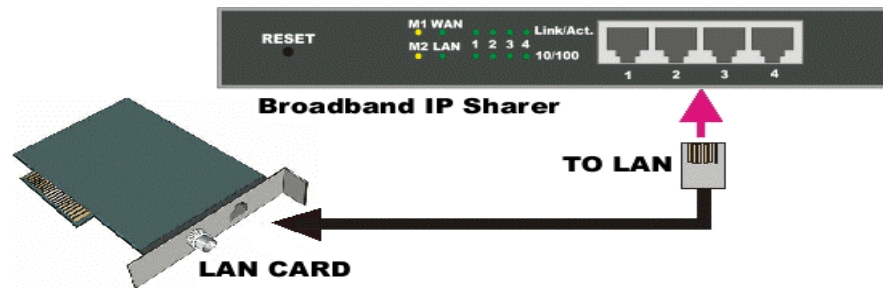


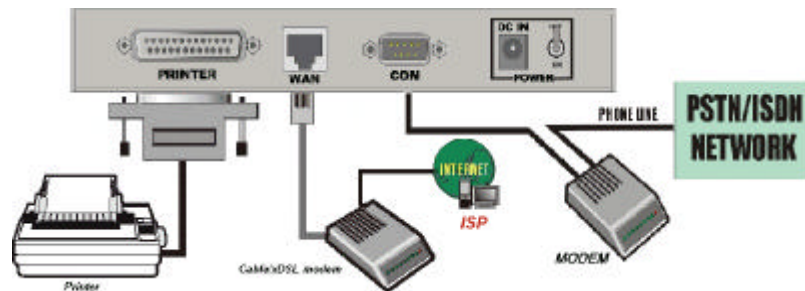
Quick Installation Guide for 4-Port Switch Broadband Router

A. Hardware Installation

1. **Setup LAN connection:** connect an Ethernet cable from your computer's Ethernet port to one of the LAN ports of this product.



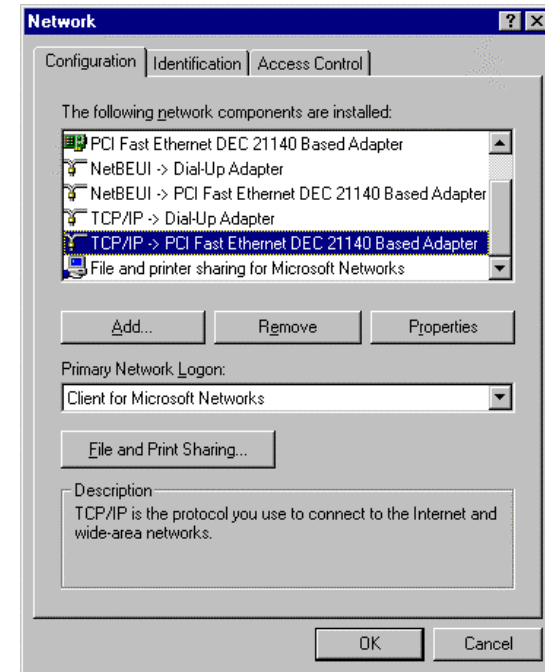
2. **Setup WAN connection:** connect the network cable from your cable (or DSL) modem to the WAN port of this product.(Optional)



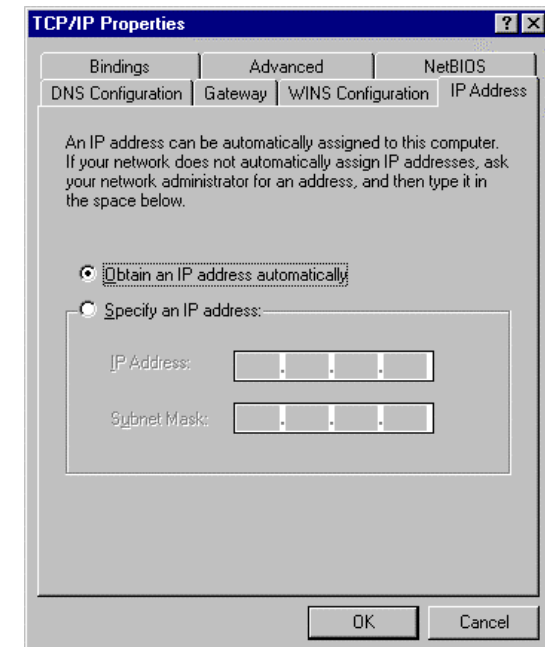
3. **Connecting this product with your printer:** use the printer cable to connect your printer to the printer port of this product. (Optional)
4. **Power on:** Connecting the power cord to power inlet and turning the power switch on, this product will automatically enter the self-test phase. When it is in the self-test phase, the indicators M1 and M2 will be lighted ON for about 5 seconds, and then M1 and M2 will be flashed 3 times to indicate that the self-test operation has finished. Finally, the M1 will be continuously flashed once per second to indicate that this product is in normal operation.

B. Make correct TCP/IP settings of your computer

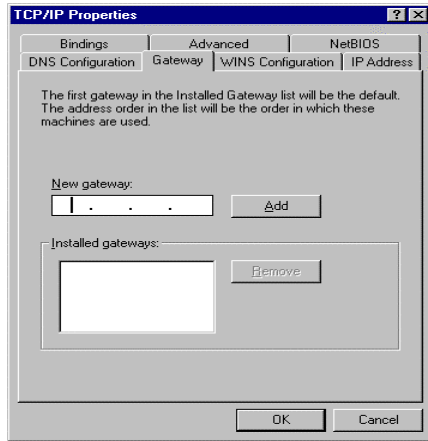
1. Install the TCP/IP protocol for your PC if it has not yet been installed. (Please refer to *User Manual - Appendix B.1.*)
2. From the Windows *Start* button on your PC, choose *Settings*, and select the *Control Panel* item.
3. Double click the *Network* icon. Select the TCP/IP line that has been associated to your network card in the *Configuration* tab of the Network window.



4. Click on the *Properties* button. Click the *IP Address* tab. Select *Obtain an IP address automatically*.



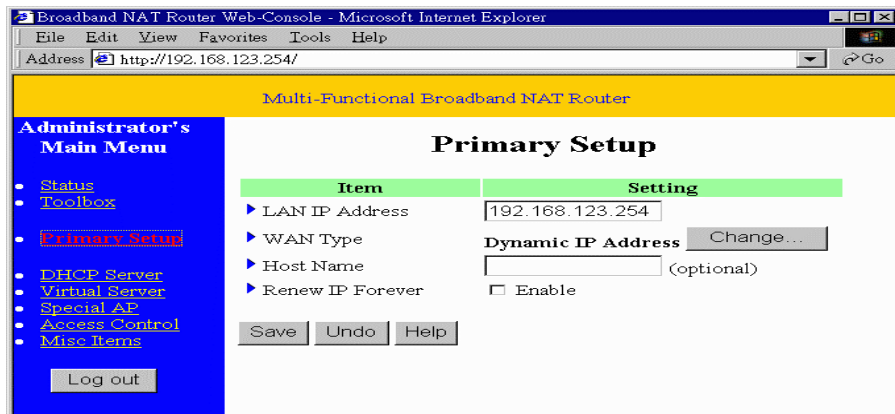
5. Click the **Gateway** tab. Clear all of the gateway settings. Click on the **OK** button.



(Note. If you want to set the *IP* of your PC manually, please refer to *User Manual – Appendix B.2.*)

C. Configuring Your IP-Share with a Web Browser

1. Activate your browser, and *disable the proxy* or *add the IP address of this product into the exceptions*. Then, type this product's IP address (for example: <http://192.168.123.254>) in the *Location* (for Netscape) or *Address* (for IE) field and press ENTER.
2. Key in the system password (the factory default setting is "admin") in the *System Password* field and click on the **Log in** button.
3. Press the **Primary Setup** button and the following screen will be shown.



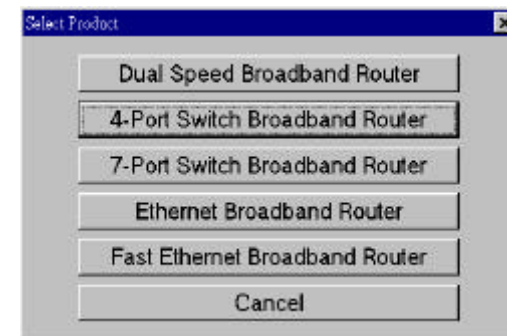
4. Press the **Change...** button, select the WAN type you use, and then press the **Save** button.
5. Key in the proper values for the setting items shown on the page. For the meaning of the items, please refer to the on-line help or *User Manual – Chapter 4.4*.
6. After all of the items are set, press the **Save** button and reboot this product.

D. Use Installation CD-ROM

1. Insert the installation CD-ROM into the CD-ROM drive. The following window will be shown automatically. If it isn't, please run "install.exe" on the CD-ROM.



2. If you want to install the **Print Server**, please click on the "Install" button and follow the on-screen instructions to complete the installation.
3. To read the user manual, please click on the "Read User Manual" button. The following window will be shown. Click on the "**4-Port Switch Broadband Router**" button.



4. If you don't have any viewer for the user manual, you can execute "rs405eng.exe" in the "viewer" sub-directory to install the **Acrobat Reader 4.05**.