

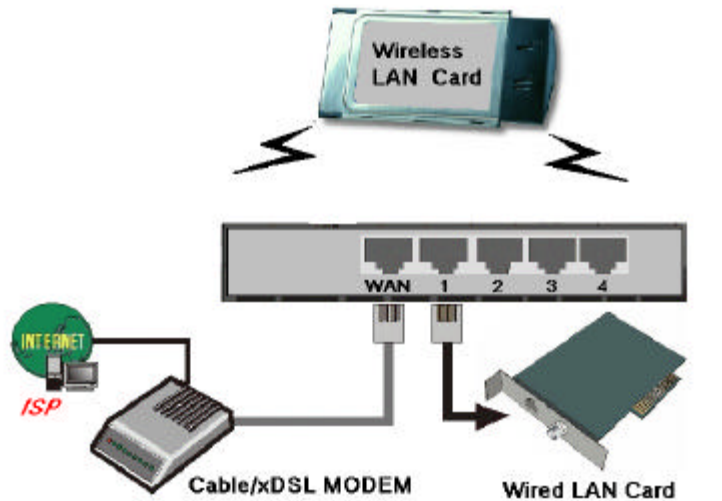
Quick Installation Guide for 4-Port Wireless Broadband Router

A. Hardware Installation

1. Set up LAN connection:

- Wired LAN connection: connect an Ethernet cable from your computer's Ethernet port to one of the LAN ports of this product.
- Wireless LAN connection: locate this product a proper position to gain the best transmit performance.

2. Set up WAN connection: connect the network cable from your cable (or DSL) modem to the WAN port of this product.



3. Connecting this product with your printer: use the printer cable to connect your printer to the printer port of this product. (optional)

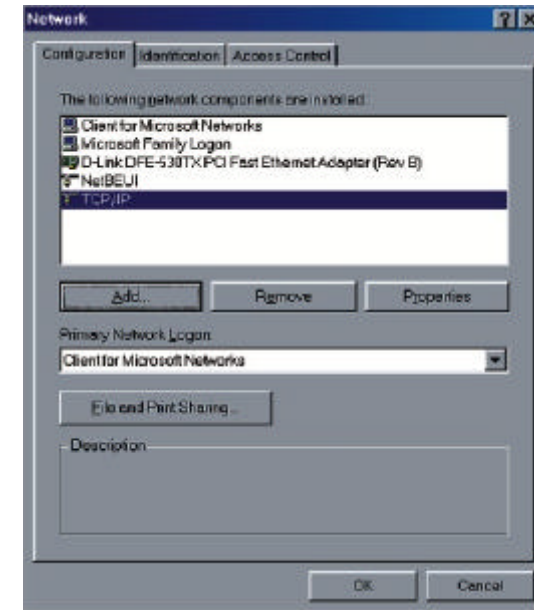
4. Power on:

By connecting the power cord to the power inlet and turning the power switch on, this product will automatically enter the self-test phase. When it is in the self-test phase, the indicators M1 and M2 will be lighted ON for about 5 seconds, and then M1 and M2 will be flashed 3 times to indicate that the self-test operation has finished. Finally, the M1 will be continuously flashed once per second to indicate that this product is in normal operation.

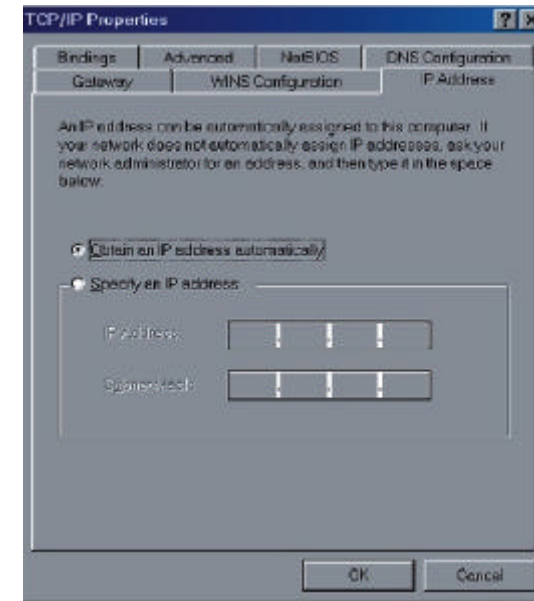
B. Configure the TCP/IP Settings of Your Computer

- Install the TCP/IP protocol for your PC if it has not yet been installed. (Please refer to *User's Manual - Appendix A.1.*)
- From the Windows **Start** button on your PC, choose **Settings**, and select the **Control Panel** item.
- Double click the **Network** icon. Select the TCP/IP line that has been associated to your

network card in the **Configuration** tab of the Network window.



- Click on the **Properties** button. Click the **IP Address** tab. Select **Obtain an IP address automatically**.



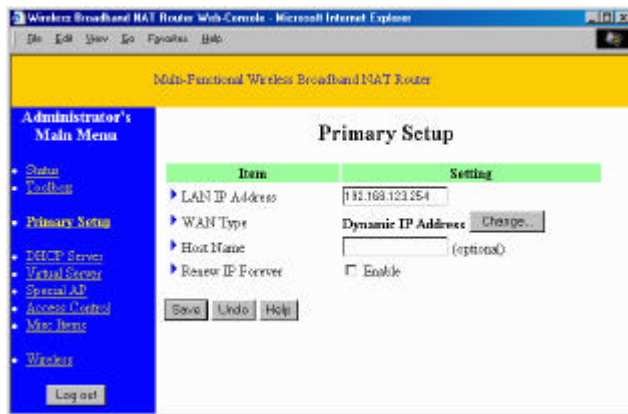
- Click the **Gateway** tab. Clear all of the gateway settings. Click on the **OK** button.



(Note: If you want to set the *IP* of your PC manually, please refer to *User's Manual – Appendix A.2.*)

C. Configuring Your Router with a Web Browser

1. Activate your browser, and **disable the proxy** or **add the IP address of this product into the exceptions**. Then type this product's IP address (for example: **http://192.168.123.254**) in the *Location* (for Netscape) or *Address* (for IE) field and press ENTER.
2. Key in the system password (the factory default setting is "admin") in the **System Password** field and click on the **Log in** button.
3. Press the **Primary Setup** button and the following screen will be shown.

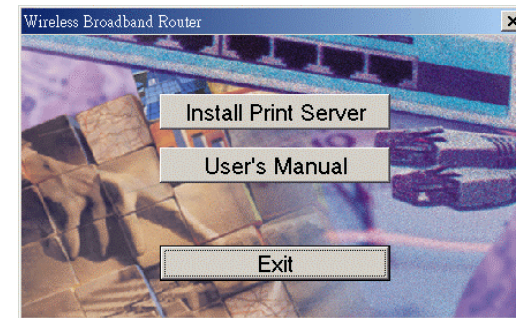


4. Press the **Change...** button, select the type of WAN you use, and then press the **Save** button.

5. Key in the proper values for the setting items shown on the page. For the meaning of the items, please refer to the online help or *User's Manual – Chapter 4.4.*
6. After all of the items are set, press the **Save** button and reboot this product.

D. Use Installation CD-ROM

1. Insert the installation CD-ROM into the CD-ROM drive. The following window will be shown automatically. If it isn't, please run "install.exe" on the CD-ROM.



2. If you want to install the **Print Server**, please click on the "Install Print Server" button and follow the on-screen instructions to complete the installation.
3. To read the User's Manual, please click on the "User's Manual" button.
4. If you don't have any viewer for the User's Manual, you can execute "rs405eng.exe" in the "viewer" sub-directory to install the **Acrobat Reader 4.05**.

E. Wireless Settings

The settings for Wireless function are as follows:

IP address: 192.168.123.254

SSID: default

Channel: 6 for USA/Canada, Europe/Australia (ETSI), and Japan (All),

10 for Spain and France,

14 for Japan

WEP: disabled

Please set the corresponding settings of the stations which you want to associate with this Wireless Broadband Router.